

Homaya SL 1.0

Efficient lighting for good !

LED Lamp 12V DC for Solar Home System - 2.5W



Energy efficient 220 Lumens
with consumption of 2.5W



Affordable price



Specially designed for
Solar Home System



Multiple mounting option



Highly Reliable
15 years of use



Schneider
Electric

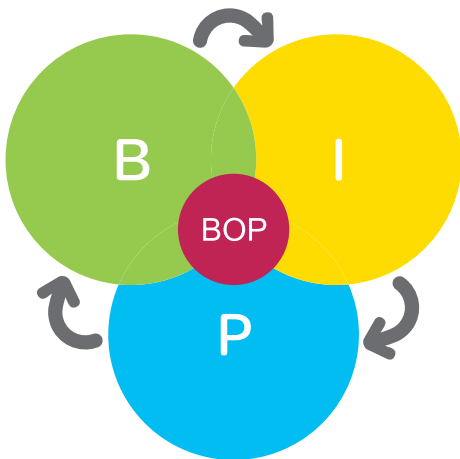
> The BipBop programme

Schneider Electric has developed a sustainable programme to bring clean, reliable and affordable electricity to the people who need it most worldwide.

With a strong will to involve local communities and local stakeholders in each country, the BipBop programme addresses three key issues to provide sustainable access to electricity:

- The lack of appropriate equipment through the development of an adequate offer;
- The lack of financial resources available for innovative energy entrepreneurs through funding;
- The skills and expertise shortage through technical and business training.

This strategy builds upon a profitable and responsible vision and is called BipBop – an acronym standing for Business, Innovation and People at the Base of the Pyramid*.



Business

Support companies dedicated to the electrical business for the Base of the Pyramid through the creation of an investment fund

Innovation

Build adequate solutions to be a champion in the electrical distribution field for the Base of the Pyramid

People

Train and sponsor disadvantaged people at the Base of the Pyramid in energy management related skills and sponsor them

* BOP for Base of the Pyramid. It is the expression commonly used to refer to people with the lowest income on a global scale in a given country.

> Application

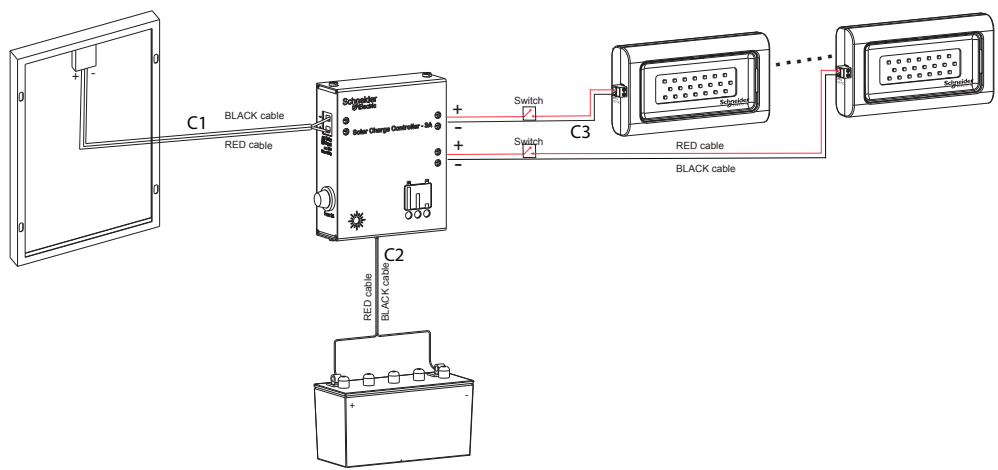
Specially designed for Solar Home System, this product is energy efficient LED Lamp powered by 12V DC source. It helps people to light their homes in off-grid villages with just 2.5W power and suitable for tough mounting conditions. The illumination level is comfortable for a family to perform daily activities. With growing energy needs of off-grid people, this LED lamp is an attractive offer beneficial in replacing the existing DC CFL of solar home system.

> Product specification

Specifications	AEH-LB02-U25W
Power consumption	2.5 W
Operating voltage	10,8 V - 20 V DC
Light output	220 Lumens, White Light
Dimensions (L x B x H) in mm	140 x 77 x 30
Certifications	LM 79, IDCOL, SONCAP.



> Application Guide



No. of LED Lamp for SHS - 2.5W	Solar Panel Rating Vmpp = 17V	Solar Charge Controller Capacity	Battery rating	Cable size		
				C1	C2	C3
No's	Wp	A	V / Ah	Sq.mm/ AWG	Sq.mm/ AWG	Sq.mm/ AWG
1	5	3	12/5	0.75/18	1.5/16	0.34/22
2	10	3	12/7.2	0.75/18	1.5/16	0.34/22
4	20	3	12/15	1.5/16	1.5/16	0.34/22
6	30	3	12/20	1.5/16	2.5/14	0.34/22
8	40	3	12/30	2.5/14	2.5/14	0.34/22

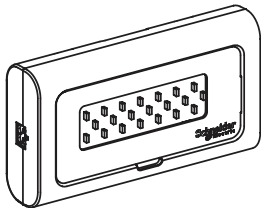
The above sizing calculations are based on following assumptions:

- The cable lenght from solar panel to charge controller is 10 meters.
- The cable lenght form charge controller to lamps is 5 meters.
- The cable lenght from charge controller to battery is 1.5 meter.
- The lamps usage is 5 hours / day.
- The fully charged battery will provide 2 days of autonomy.

> Installation Guide

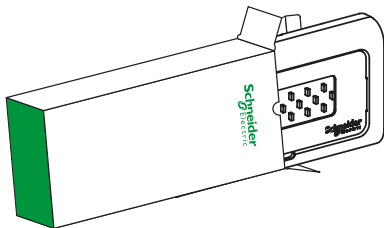
LED Lamp for Solar Home System - 2.5W

Quick Installation Guide



AEH-LB02-U25W

Package Contents



DC Plug



Strap



Screws - 2 Nos.
M3.5 X 19 mm

Tools Required



Screw driver



Wire stripper



Manual drilling tool
Battery operated
Drilling machine

Materials Required



Bed switch



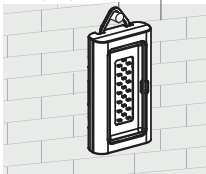
Cable-2core 0.34 mm²

Multiple Mounting Options

Wall mounting



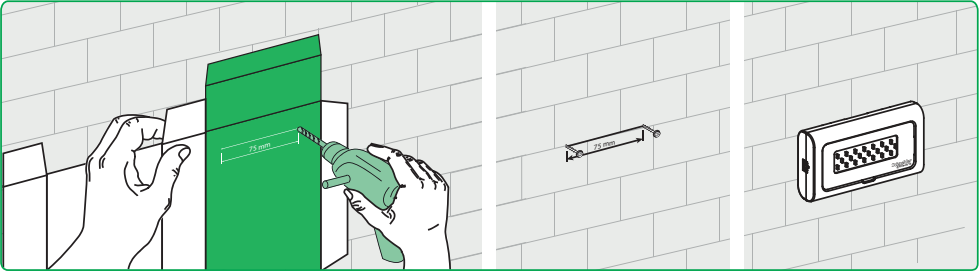
Hanging



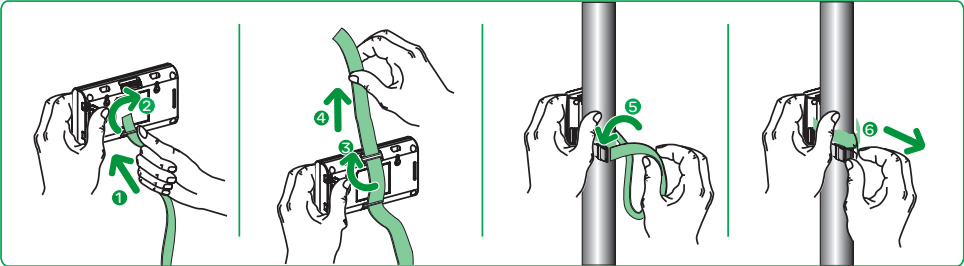
Pole mounting



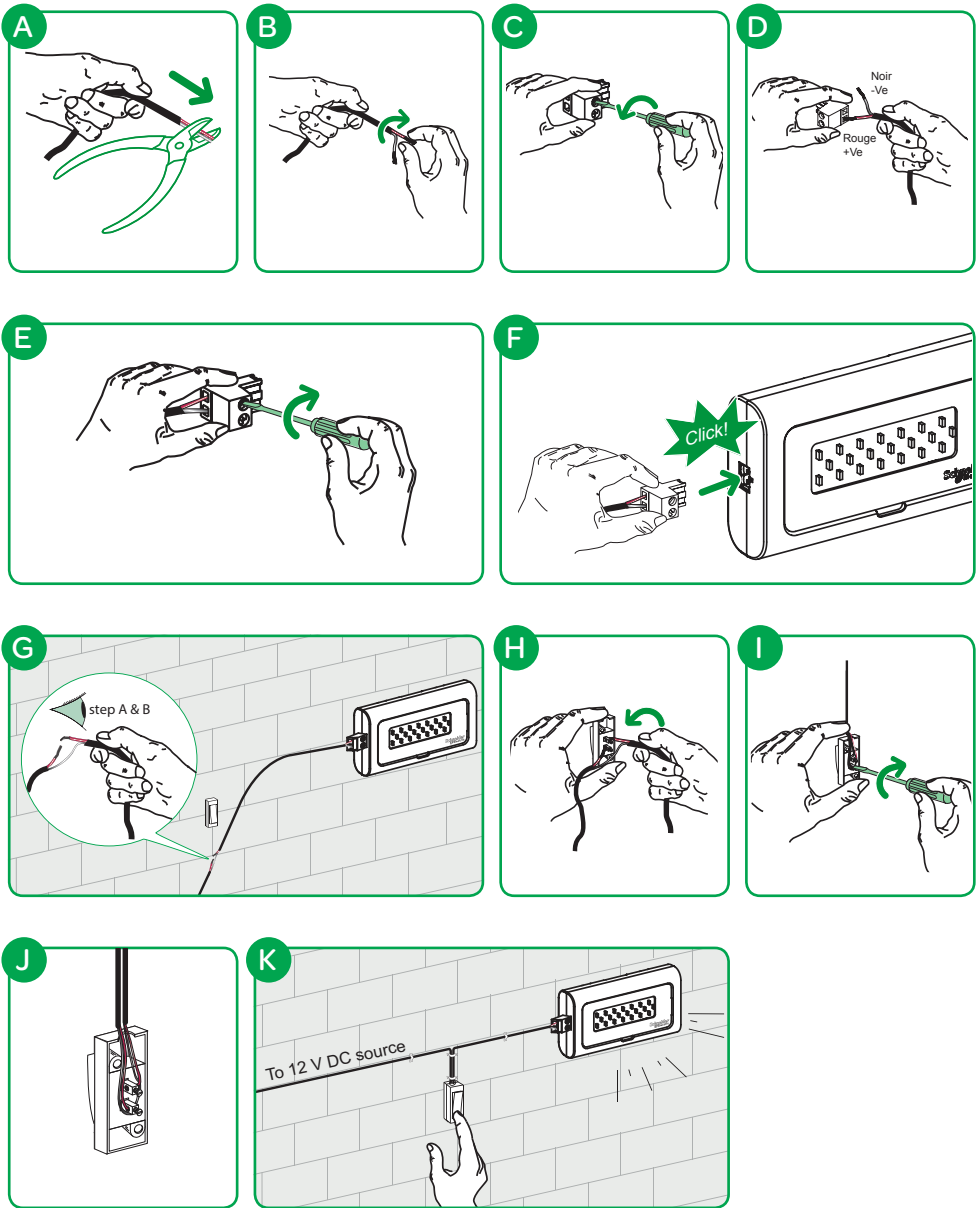
Fixing the lamp on the wall



Fixing the lamp on the pole using strap



Connecting LED lamp to 12 V DC source





To know more:
schneider-electric.com/bipbop

Copyright Schneider Electric

Schneider Electric Industry SAS
Département Développement Durable

35 rue Joseph Monier
F-92506 Rueil-Malmaison Cedex (France)

Tel : +33 (0)1 41 29 70 00
Fax : +33 (0)1 41 29 71 00
Mail : global.bipbop@schneider-electric.com

